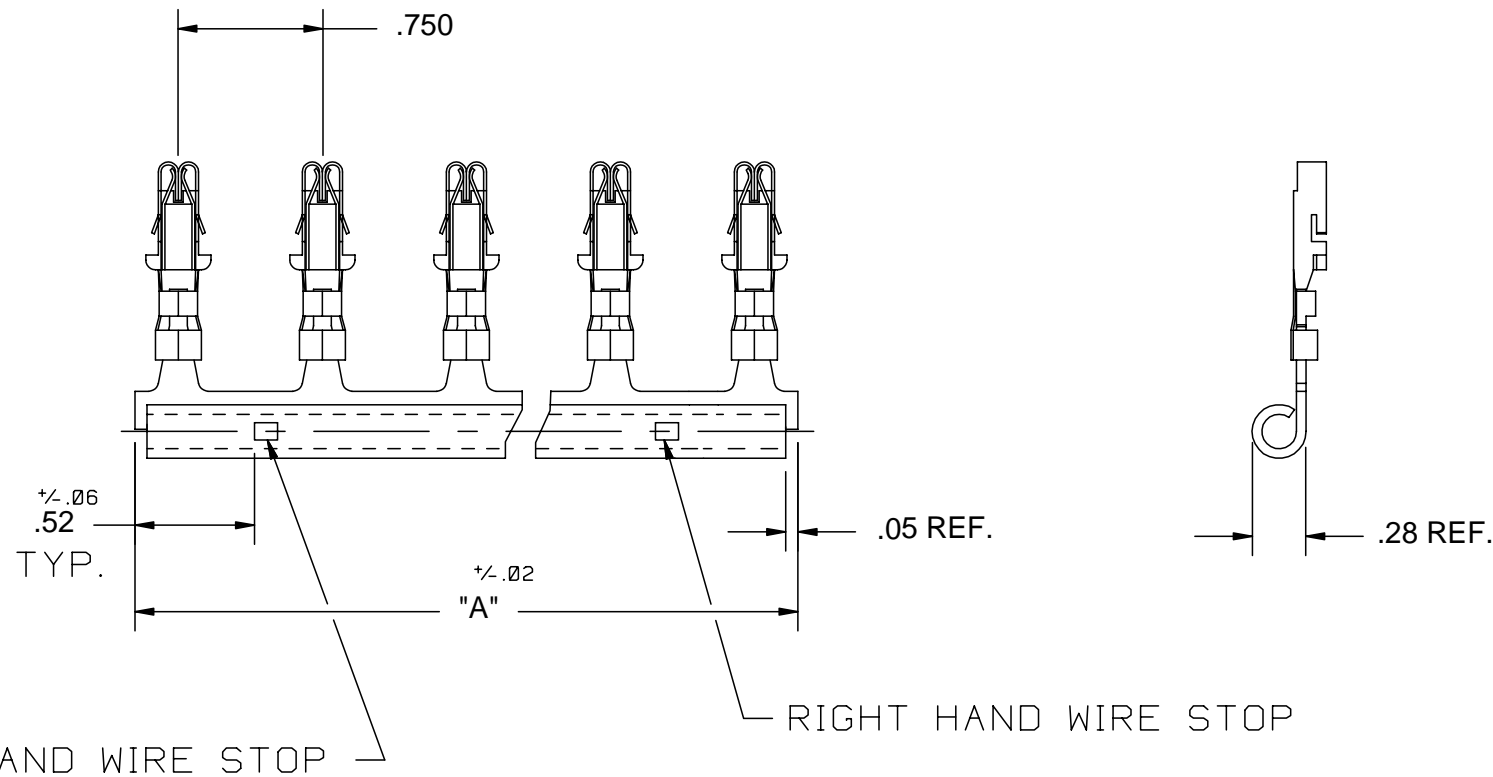


REV	REVISION DATE	RELEASE NUMBER	DESCRIPTION	DRAWN BY	CHECKED BY	APPROVED BY
00	3-24-99	2185	CHANGED DILL NOS. ADDED FARGO NOS; RE-RELEASED .52 WAS "C" DIM.	SJB	JCB	REF
01	9-6-00	2405	ADDED PART #BB-2US AND NOTE #8	SJB	JCB	REF
02	5-7-02	2876	ADDED PART #BB-3RS, BB-3LS, BB-4RT, BB-5RT CA-260 WAS CA-195	SJB	JCB	REF



NOTES:

- 1- I.D. OF ROLLED SECTION TO ACCEPT 10-8 GAGE WIRE. RECOMMENDED WIRE STRIP 22/32".
- 2- UNPLATED COPPER MAT'L.: CA-110, E.T.P. COPPER, FARGO #XX-BBS1.33
- 3- PLATED COPPER MAT'L.: CA-110, E.T.P. TIN PLATED COPPER, .00002-.00008 THICK FARGO #XX-BBS1.33T
- 4- UNPLATED TERMINAL: BRASS CA260, WITH STAINLESS STEEL CONTACT REINFORCING SPRING, FARGO #TF-13PC1UC
- 5- PLATED TERMINAL: SILVER PLATED CA195, WITH STAINLESS STEEL CONTACT REINFORCING SPRING, FARGO #TF-13PC1SC
- 6- TERMINALS ARE CRIMPED AND SOLDERED.
- 7- SEE DRAWING 171-00-23 FOR CRIMPING AND SOLDERING SPECIFICATIONS.
- 8- 2 POSITION UNIVERSAL BUS BARS HAVE NO WIRE STOP HOLE.

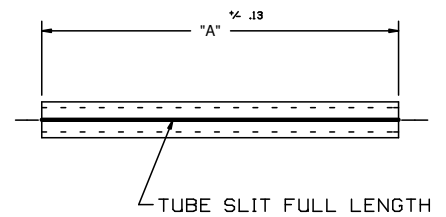
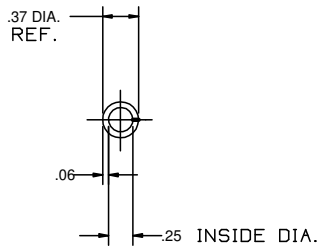
12 POS.	092616 BB-12L	092636 BB-12R		092739 BB-12LT					075594 BB-SLV093	8.83	
11 POS.	092575 BB-11L	092689 BB-11R		092738 BB-11LT					075587 BB-SLV085	8.08	
10 POS.	092617 BB-10L	092615 BB-10R		092726 BB-10LT					075572 BB-SLV078	7.33	
9 POS.	092570 BB-9L				092688 BB-9RT				075589 BB-SLV070	6.58	
8 POS.	092577 BB-8L	092576 BB-8R		092728 BB-8LT	092744 BB-8RT			092605 BB-8RS	075644 BB-SLV062	5.83	
7 POS.	092628 BB-7L	092640 BB-7R		092743 BB-7LT					075605 BB-SLV055	5.08	
6 POS.	092580 BB-6L	092606 BB-6R		092725 BB-6LT	092727 BB-6RT			092604 BB-6LS	075588 BB-SLV047	4.33	
5 POS.	092634 BB-5L	092626 BB-5R		092731 BB-5LT	092626 BB-5RT			092652 BB-5LS	092651 BB-5RS	075586 BB-SLV040	3.58
4 POS.	092579 BB-4L	092612 BB-4R		092729 BB-4LT	092612 BB-4RT			092603 BB-4LS	092650 BB-4RS	075649 BB-SLV032	2.83
3 POS.	092578 BB-3L	092639 BB-3R		092724 BB-3LT	092770 BB-3RT			BB-3LS	092654 BB-3RS	075570 BB-SLV022	2.08
2 POS.			092648 BB-2U			092741 BB-2UT			BB-2US	075648 BB-SLV017	1.33
	LEFT CRIMP DILL NO. FARGO NO.	RIGHT CRIMP DILL NO. FARGO NO.	UNIVERSAL DILL NO. FARGO NO.	LEFT CRIMP DILL NO. FARGO NO.	RIGHT CRIMP DILL NO. FARGO NO.	UNIVERSAL DILL NO. FARGO NO.	LEFT CRIMP DILL NO. FARGO NO.	RIGHT CRIMP DILL NO. FARGO NO.	UNIVERSAL DILL NO. FARGO NO.	INSULATOR NO. DILL NO. FARGO NO.	DIM. "A"
	UNPLATED COPPER UNPLATED TERMINAL			PLATED COPPER UNPLATED TERMINAL			PLATED COPPER PLATED TERMINAL				

**OBSELETE**

FILE # 000414-2		SHEET 1 OF 1		FARGO ASSEMBLY OF PA	
UNLESS STATED OTHERWISE: DIMENSIONS ARE IN INCHES. AND TOLERANCE ARE:		THIRD ANGLE PROJECTION		P.O. BOX 550 NORRISTOWN, PA 19404 PHONE: 610-272-6850 FAX: 610-272-6858	
.X +/- .030				OUR COMPANY GOALS 1. QUALITY 2. DELIVERY 3. FAIR PRICE 4. GOLDEN RULE	
.XX +/- .020		DRAWN PHB	DATE 3-23-93	ELECTRICAL SYSTEMS ASSEMBLY AND DESIGN	
.XXX +/- .010		CHECKED SJB	DATE 3-93	TITLE: 3/4" CENTERLINE BUS BAR, WITH AUTOFUSE TERMINAL AND SPRING CLIP	
FRACTIONAL +/- 1/64		APPROVED	DATE	DRAWING NUMBER C-171-01-00	
ANGULAR +/- 30 MIN		SCALE: NONE		REVISION 02	
THIS DOCUMENT CONTAINS PROPRIETARY INFORMATION AND IS NOT TO BE USED IN ANY WAY DETRIMENTAL TO THE INTEREST OF FARGO ASSEMBLY OF PA, INC.					

REV	REVISION DATE	RELEASE NUMBER	DESCRIPTION	DRAWN BY	CHECKED BY	APPROVED BY
00	6-8-00	2318	REVISED LENGTH AND PART NUMBERS	SJB	JCB	REF
01	6-12-03	3279	ADDED PART #BB-SLV011	SJB	JCB	REF
02	6-18-03	3288	ADDED PART#BB-SLV045	SJB	JCB	REF
03	9-1-04	3700	ADDED PART#BB-SLV035	SJB	JCB	REF

	BB-SLV035	3.50
	BB-SLV045	4.50
	BB-SLV011	1.18
075576	BB-SLV110	11.00
075594	BB-SLV093	9.25
075587	BB-SLV085	8.50
075572	BB-SLV078	7.75
075589	BB-SLV070	7.00
075585	BB-SLV065	6.50
075644	BB-SLV062	6.25
075571	BB-SLV060	6.00
075605	BB-SLV055	5.50
075549	BB-SLV051	5.25
075588	BB-SLV047	4.75
075586	BB-SLV040	4.00
075649	BB-SLV032	3.25
075575	BB-SLV030	3.00
075640	BB-SLV027	2.62
075570	BB-SLV022	2.25
075565	BB-SLV020	2.00
075648	BB-SLV017	1.75
075642	BB-SLV015	1.50
DILL NO.	FARGO NO.	"A" LENGTH (INCHES)



MAT:- BLACK POLYETHYLENE

FILE # 951128-1	SHEET 1 OF 1	FARGO ASSEMBLY OF PA
UNLESS STATED OTHERWISE, DIMENSIONS ARE IN INCHES, AND TOLERANCE ARE:	THIRD ANGLE PROJECTION	P.O. BOX 550 NORRISTOWN, PA 19404 PHONE: 610-272-6850 FAX: 610-272-6858
.X +/-	DRAWN DATE 3-24-00	OUR COMPANY GOALS 1. QUALITY 2. DELIVERY 3. FAIR PRICE 4. GOLDEN RULE
.XX +/- .010	CHECKED DATE 3-24-00	ELECTRICAL SYSTEMS ASSEMBLY AND DESIGN
.XXX +/-	APPROVED DATE 3-24-00	TITLE: BUS BAR INSULATOR SLEEVE
FRACTIONAL +/- 1/64	REF 3-24-00	DRAWING NUMBER C171-01-01
ANGULAR +/- 30 MIN	SCALE: FULL	REVISION 03
THIS DOCUMENT CONTAINS PROPRIETARY INFORMATION AND IS NOT TO BE USED IN ANY WAY DETRIMENTAL TO THE INTEREST OF FARGO ASSEMBLY OF PA, INC.		