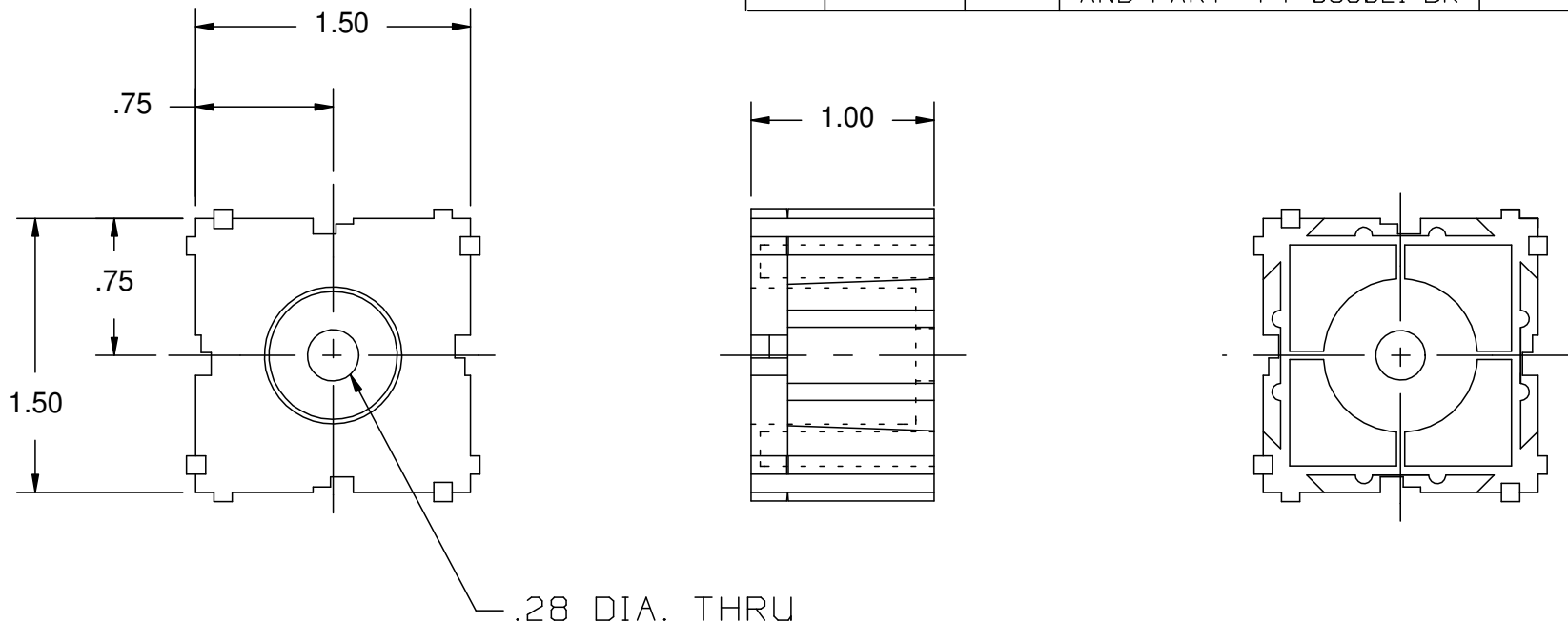


REV	REVISION DATE	RELEASE NUMBER	DESCRIPTION	DRAWN BY	CHECKED BY	APPROVED BY
A	5-7-91		MAT'L. WAS #95725			
00	3-23-99	1935	MAT'L. WAS 95775 RE-RELEASED	SJB	JCB	REF
01	2-03	3149	UPDATED MATERIAL NO.	SJB	JCB	REF
02	5-05	3957	REMOVED GREY MATERIAL AND PART #PT-059021 BK	SJB	JCB	REF



FARGO #PT-059021

NOTES:



1-MAT'L.- NYLON 66, GLASS FILLED
FARGO #CP-N66BLKHR

2- FOR USE WITH 1/4 SCREW
OR EQUIVALENT.

FILE # 990323-2	SHEET 1 OF 1	FARGO ASSEMBLY OF PA P.O. BOX 550 NORRISTOWN, PA 19404 PHONE: 610-272-6850 FAX: 610-272-6858	OUR COMPANY GOALS 1. QUALITY 2. DELIVERY 3. FAIR PRICE 4. GOLDEN RULE
UNLESS STATED OTHERWISE; DIMENSIONS ARE IN INCHES. AND TOLERANCE ARE:	THIRD ANGLE PROJECTION 	ELECTRICAL SYSTEMS ASSEMBLY AND DESIGN	
.X +/- .025	DRAWN SJB	DATE 3-23-99	TITLE: DILL BLOX MOUNTING MODULE
.XX +/- .015	CHECKED JCB	DATE 3-99	DRAWING NUMBER C7174-99-00
.XXX +/- .005	APPROVED REF	DATE 3-99	REVISION 02
FRACTIONAL +/- 1/64	SCALE: FULL	THIS DOCUMENT CONTAINS PROPRIETARY INFORMATION AND IS NOT TO BE USED IN ANY WAY DETRIMENTAL TO THE INTEREST OF FARGO ASSEMBLY OF PA, INC.	
ANGULAR +/- 30 MIN			